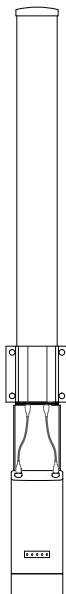


# Quick Start Guide

5GHz 12dBi Dual-Polarization Omnidirectional Base Station Antenna




## Package Contents

- Antenna×1
- Quick Start Guide×1
- Brakcets×2
- RF Cables×2

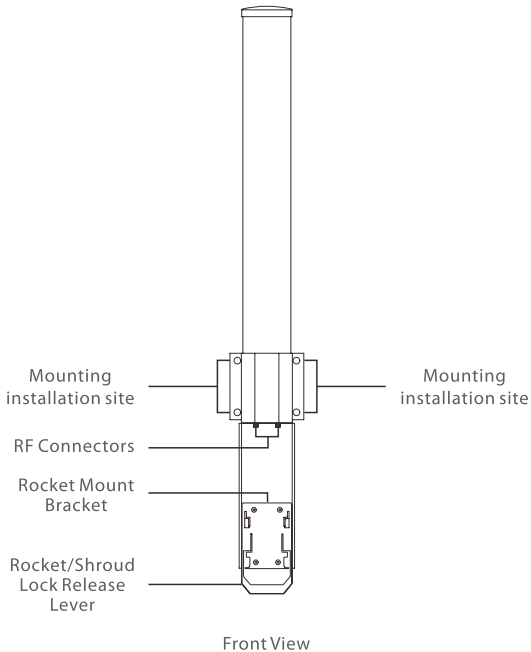
---

before use this equipment, please read this guide for installing equipment quickly.

 the wireless radio from this guide (Sold separately)

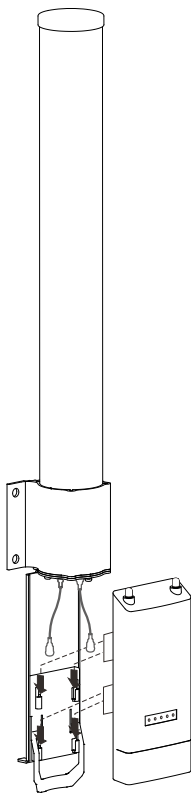
## Installation Requirements

- Shielded Category 5 (or above) cabling should be used for all wired Ethernet connections and should be grounded through the AC ground of the PoE. We recommend that you protect your networks from the most brutal environments and devastating ESD attacks with industrial grade shielded Ethernet cable.

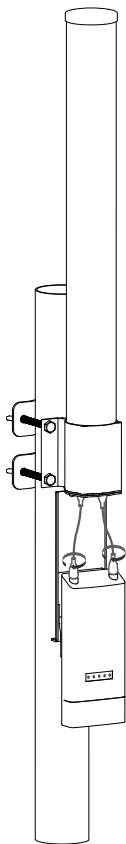


## Bracket Installation

- ① Attach the RF Cables to the connectors of antenna.
- ② Press the bracket handle, align the four snaps on the back of the wireless radio with the four card slots on the bracket, and slide down to fix the base station.



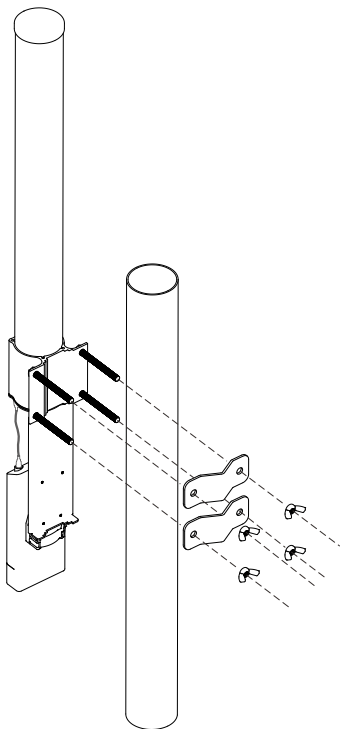
- ③ Loosen the plastic nut from the connectors of Base station
- ④ Attach one side of the two pieces RF Cables to the Base station.



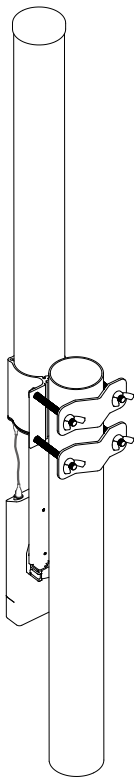
⑤ Insert the four Bolts into the main mounting bracket of the antenna. and attach it to the pole with a small fixed clamp and 4 discs.

📄 Matters needing attention:

1. Attach the antenna to the top of the pole. (If the antenna is attached to a lower point on the pole, part of the signal will be blocked by the pole.)
2. The mounting assembly can accommodate a  $\varnothing 30 - 70$  mm pole.

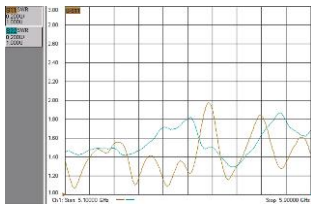


⑥ Completed installation.

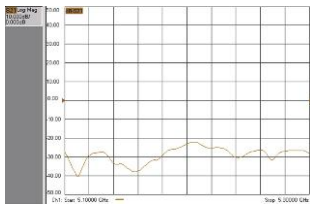


### Technical Specification

Electrical	
Model	ANT12-5G360
Frequency Range	5100-5850MHz
Gain	12dBi ± 1dBi
Polarization	Vertical and Horizontal
Isolation	>20dB
HorizontalBeamwidth	360° type
VerticalBeamwidth(3dB)	6° type
V.S.W.R	<2
Max Power	20W
Nominal Impedance	50Ω
Lighting protectioin	DC Ground
Mechanical	
Connector	2 x RPSMA
Antenna Size	Φ7X87cm
Anntea Weight	1.5kg
Colour	white
Antenna covermaterial	UV Protection ABS
OperatingTemperature	-40°C to +70°C (-32°F to +158°F)
ETSI Specification	ETS 300 019-1-4, EN 302 085(ANNEX A.1.1)

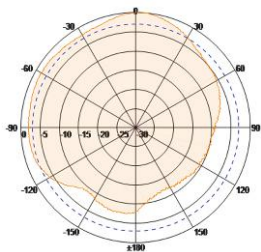


Antenna Voltage V.S.W.R

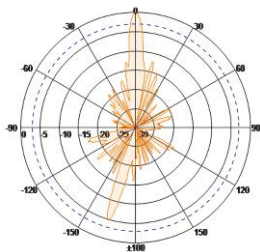


Port Isolation

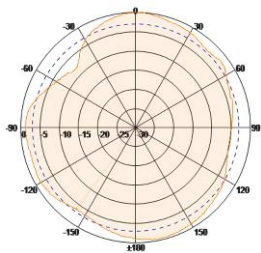
Antenna Pattern



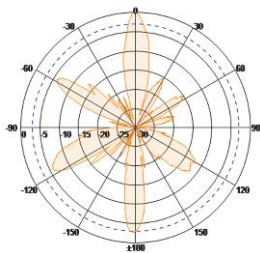
V-Pol Azimuth



V-Pol Elevation



H-Pol Azimuth



H-Pol Elevation