

ProFace X

Outdoor & Vandal-resistant Facial Recognition Terminal



ProFace X is a fully upgraded version of the ProFace product line, which is designed to deal with all kinds of scenarios. It's powered by the latest ZKTeco-customized CPU for running the intellectualized engineering facial recognition algorithm to boost up the performance in all aspects.

With its powerful core and the latest facial recognition algorithm, the ProFace X facial recognition capability has reached a new height in the biometrics industry with a maximum of 100,000 facial templates, facial recognition speed less than 0.3 sec per face, ultimate anti-spoof ability against almost all types of fake photos and videos attack .

Other than the powerful core, ProFace X is also equipped with the latest face capture system, which enables the terminal to recognize faces under extreme strong light conditions (50,000 lux), and a microwave detector to precisely evaluate the distance between the user and the device for waking up the terminal.

ProFace X comes with a robust design that can work in extreme weather conditions from -30°C to 60°C (-22°F to 140°F) ; The IP68 dust and waterproof standard and IK04 protection standard also enhance its outdoor durability.

ProFaceX supports video intercom via the mobile App ZSmart. Also, the ProFace X integrates with the ONVIF video protocol to connect to the ONVIF NVR for video surveillance and recording. Moreover, ProFace X supports SIP Protocol connect to the indoor unit.

Features

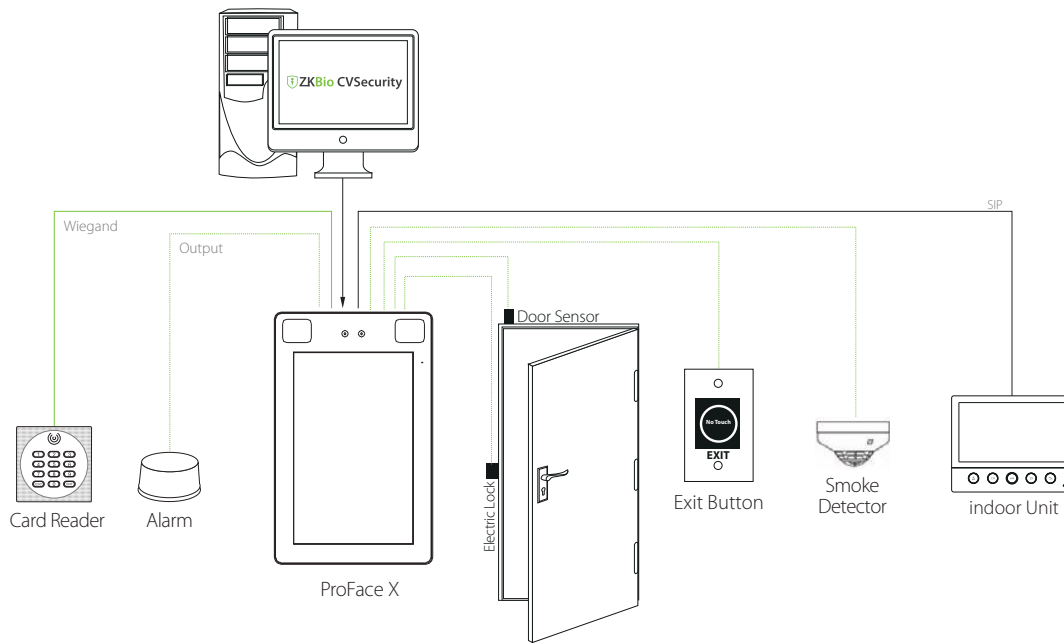
- Ultra-large capacity of facial templates; 1:N - 30,000 facial templates (standard), maximum 1:N - 100,000 facial templates (optional), 1:N-5,000 palm templates (customized)
- Rapid facial recognition within 0.3s
- Anti-spoofing algorithm against print attack (laser, color and B/W photos), videos attack, and 3D mask attack
- Intelligent energy-saving design, precisely evaluates the distance up to 2.5m (8.2ft) between the user and the device by a microwave detector before waking up the recognition terminal
- Integrated 125kHz prox card reader (optional IC Card)
- 2MP starlight CMOS sensor camera with WDR function, which enables the terminal to recognize faces under extreme lighting conditions (0.5 lux – 50,000 lux)
- Video intercom APP: ZSmart
- ONVIF Protocol, SIP Protocol
- Dynamic QR code with ZKBio CVSecurity Mobile APP
 - Supplement lighting with adjustable brightness
 - 8" touch screen with 400 lux, which offers high visibility under strong and direct light
 - Multiple communication methods: TCP/IP, RS485, RS232, Wi-Fi (optional)
 - IP68 dust-proof and waterproof standard and IK04 protection standard
 - Wide range of working temperature (-30 ~ 60°C; -22 ~ 140°F)

Specifications (G: GL Exclusive Feature)

Capacity		Access Control Interface:	Communication
G Faces	30,000 (1:N) 100,000(Optional)	Lock Relay Output Alarm Output / Auxiliary Input Exit Button / Door Sensor	TCP/IP Wiegand Input / Output Wi-Fi (Optional) RS485* / RS232*
G Palm	5,000(Customized)		
G Users / Cards	50,000	Special Functions:	Additional Info
Transactions	1,000,000(Optional 2,000,000)	G IP68 & IK04 G 0.3s High Speed Face Verification Live Face detection Communication Https Encrypted Optional	G ZKFace 3.9 & ArmaturaPalm(Customized) Operating Temperature: -30°C ~ 60°C, (-22°F~ 140°F) Operating Humidity: ≤93% Storage Temperature: -40°C ~ +65°C Storage Humidity: ≤93% Net Weight: 853g Dimensions (L*W*D): 227*143*26mm
User Photos	30,000	G Event Snapshot	
Event Photos	10,000	G Video intercom	
* Note: ProFace X with the optional 100,000 faces capacity, it does not support the following features: photo saving function, video intercom function, palm recognition function.		G ONVIF Protocol (Compatible with Profile S, Profile T, Profile G, Profile C, Profile Q & Profile A)	
Compatibility		G SIP Protocol (Compatible with VT07-B01,Optional)	Power
Security Relay Box Wiegand / RS485 Slave Reader with FP / RFID / Barcode / QR-code		Standard Functions:	Operating Voltage 12V DC Current Draw < 2,000mA
G Software: ZKBio CVSecurity		Access Levels, Groups, Holidays, DST, Duress Mode (Password), Anti-Passback, Record Query, Custom Wallpaper & Screen Saver, Tamper Switch Alarm	
G Mobile App: ZSmart(Optional)			
Hardware			
G 1GHz Dual Core Customized Computer Vision CPU			
G 1G RAM / 8G Flash 8" (400lux) IPS Touch LCD			
G 125KHz EM Reader / 13.56MHz MF(Optional) 2MP WDR Low Light Camera Adjustable Light brightness LED Hi-Fi Voice Microphone Distance Detection Sensor Reset Button and Tamper Switch			

* Note: RS232 is for external printer and RS485 is for RS485 readers.

Configuration



Dimensions (mm)

